

3A BEVEL SEAT UNION FITTINGS

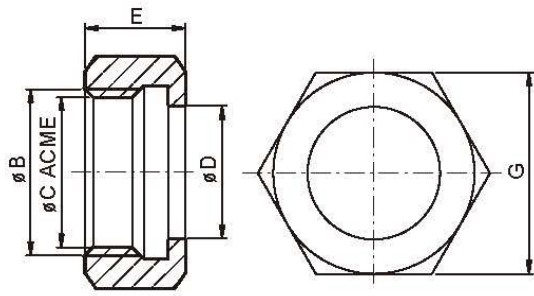


Jui Ming Metal Industrial Co., Ltd.



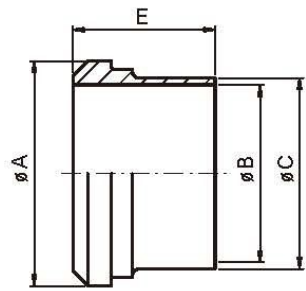
1. Standards: 3A STD.
2. Applications: For the Food, Beverage, and other Hygiene Industry
3. Working Pressures: Up to 400PSI.
4. Materials:
 - Hex. Nut-----TP-304
 - Expanding Liner-----TP-304, 316, 316L
 - Expanding Male part-----TP-304, 316, 316L
 - Welding Liner-----TP-304, 316, 316L
 - Welding Male part-----TP-304, 316, 316L
 - Blank Hex. Nut-----TP-304, 316, 316L
 - Blank Liner-----TP-304, 316, 316L
5. Surface Finished: ID & OD 150 Grit or equivalent 32RA.
6. Size range: 1"-----4"
7. Screw: Acme

3A BEVEL SEAT UNION FITTINGS



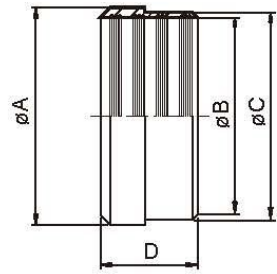
3A-13H 六角螺帽
3A HEXAGONAL NUT

SIZE	B	C	D	E	G
1"	38.02	34.34*1/8	30.3	23.0	46.0
1 1/2"	51.54	47.86*1/8	43.4	24.6	61.1
2"	65.05	61.37*1/8	56.5	27.0	76.2
2 1/2"	78.56	74.88*1/8	69.6	30.15	91.3
3"	92.08	88.40*1/8	82.7	32.5	106.4
4"	120.14	115.42*1/6	108.9	38.1	137.6



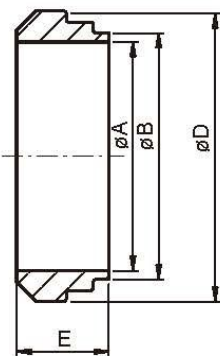
3A-14A 長型平接頭
LONG WELD LINER

SIZE	A	B	C	E
1"	33.3	22.2	25.7	34.9
1 1/2"	46.8	34.9	38.4	38.1
2"	60.3	47.5	51.1	38.1
2 1/2"	73.8	60.2	63.8	44.5
3"	87.3	72.9	76.5	44.5
4"	114.3	97.4	101.9	44.5



3A-14R 擴管平接頭
RECESSLESS LINER

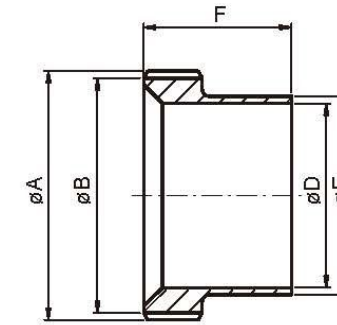
SIZE	A	B	C	D
1"	33.3	25.5	29.5	19.1
1 1/2"	46.8	38.2	42.6	28.6
2"	60.3	50.9	55.7	33.3
2 1/2"	73.8	63.6	68.8	34.9
3"	87.3	76.3	81.9	36.5
4"	114.3	101.7	108.1	38.1



3A-14PRF 短型平接頭
3A SHORT BEVEL SEAT WELD LINER

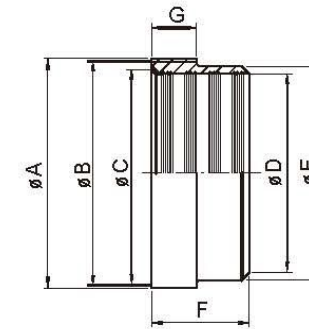
SIZE	A	B	D	E
1"	22.2	25.7	33.3	18.3
1 1/2"	34.9	38.4	46.8	18.3
2"	47.5	51.1	60.3	19.1
2 1/2"	60.2	63.8	73.8	22.3
3"	72.9	76.5	87.3	23.1
4"	97.4	101.9	114.3	26.2

3A BEVEL SEAT UNION FITTINGS



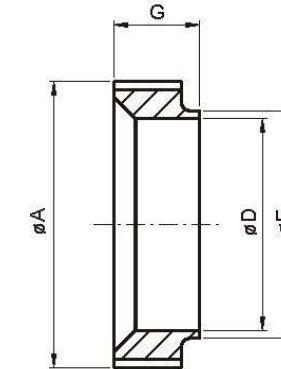
3A-15A 長型牙接頭
LONG WELD MALE

SIZE	A	B	D	E	F
1"	37.13ACME 8TPI	33.4	22.2	25.7	34.9
1 1/2"	50.65ACME 8TPI	47.0	34.9	38.4	38.1
2"	64.16ACME 8TPI	60.5	47.5	51.1	38.1
2 1/2"	77.67ACME 8TPI	74.0	60.2	63.8	44.5
3"	91.19ACME 8TPI	87.5	72.9	76.5	44.5
4"	119.25ACME 6TPI	114.5	97.4	101.9	44.5



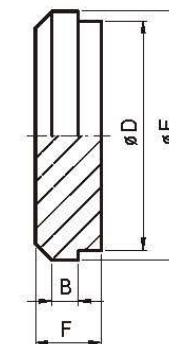
3A-15R 擴管牙接頭
RECESSLESS MALE

SIZE	A	B	C	D	E	F	G
1"	37.13	33.45	30.2	25.5	29.5	20.6	16.5
1 1/2"	50.65	46.96	43.7	38.2	42.6	28.6	16.5
2"	64.17	60.48	57.2	50.9	55.7	34.9	17.1
2 1/2"	77.67	73.99	70.7	63.6	68.8	38.1	18.3
3"	91.19	87.5	84.2	76.3	81.9	41.3	19.1
4"	119.25	114.53	109.4	101.7	108.1	41.3	22.2



3A-15 TRF 短型牙接頭
3A SHORT BEVEL SEAT WELD MALE

SIZE	A	D	E	G
1"	37.13+0-0.46	22.2	25.7	18.3
1 1/2"	50.65+0-0.48	34.9	38.4	18.3
2"	64.17+0-0.51	47.5	51.1	19.1
2 1/2"	77.67+0-0.53	60.2	63.8	22.2
3"	91.19+0-0.56	72.9	76.5	23.1
4"	119.25+0-0.64	97.4	101.9	26.2



3A-16A 盲蓋
BLANK CAP

SIZE	B	D	E	F
1"	4.8	29.5	33.4	12.6
1.5"	4.7	42.6	46.9	14.3
2"	6.4	55.7	60.5	16.0
2.5"	7.1	69.0	73.9	18.2
3"	7.1	81.9	87.5	18.2
4"	7.9	108.0	114.5	20.6